



OASIS INTERNATIONAL

AQUA POINTE™

HANDS FREE ELECTRONIC BOTTLE FILLER
MWEBF, MW8EBF, MW12EBF

Suggested Specification

Model MW8EBF shall deliver 8.0 gph of 50°F water at 90°F ambient and 80°F inlet water. Model MW12EBF shall deliver 12.0 gph of 50°F water at 90°F ambient and 80°F inlet water. Model MWEBF is a non-refrigerated bottle filler and delivers ambient water. Shall be a recessed in design and the water flow to the bottle filler is by means of an electronically activated solenoid. Key AquaPointe bottle filler component contain FRESHSHIELD which utilizes a silver-based antimicrobial compound that reduces the growth of microorganisms and mildew to protect the surfaces from discoloration, odors and degradation. Basin shall be designed to eliminate splashing and standing water. Cooling system shall use R-134a refrigerant. Shall comply with ANSI A117.1 and ADA.

Model

MW8EBF Delivers 8.0 gph of chilled drinking water.

MW12EBF Delivers 12.0 gph of chilled drinking water.

MWEBF Is a non-refrigerated bottle filler. These models satisfy CABO/ANSI A117.1

Standard Features

- Built-in 100 micron strainer stops particles before they enter the waterway
- Waterways are Lead-free in materials and construction
- Heavy duty steel frame
- High efficiency cooling tank and coil
- Refrigerant R-134a
- Hands free bottle filler with auto 20 second shut off, integrated counter and filter monitor.
- Built in panel locks for easy access to chiller and filtration

Installation

- Prior to roughing, consult with local, state and federal codes for proper mounting height
- Shipped with complete instructions and wall mounting bracket
- Removable front panels allow for easy access to filtration and refrigeration unit
- Recessed mounting frame included, but water supply, electrical and waste drain required.



Options (at additional cost)

- Oasis Green Filtration System

Finishes

Standard cabinet finish: Brushed Stainless Steel

Components in this fountain are lead free as defined by the Safe Drinking Water Act Amendments of 1986, and the Lead Contamination Control Act of 1988.

ADA compliant for reach ranges. These models meet guidelines for children's (ages 5 and up) accessibility providing the floor to button height is less than 40 inches and proper clear floor space is provided for frontal approach. Fountain is ADA compliant for Adults in Wheelchairs.

Product certified to NSF/ANSI standard 61, Annex G (weighted average lead content of <=0.25%) and is in compliance with California's health and safety code section 116875 (commonly known as AB1953). The green filter has been tested to ANSI/NSF standards 42 not by NSF.

Models covered by this specification comply with all known plumbing codes. Listed by Underwriters' Laboratories to U.S. and Canadian standards.

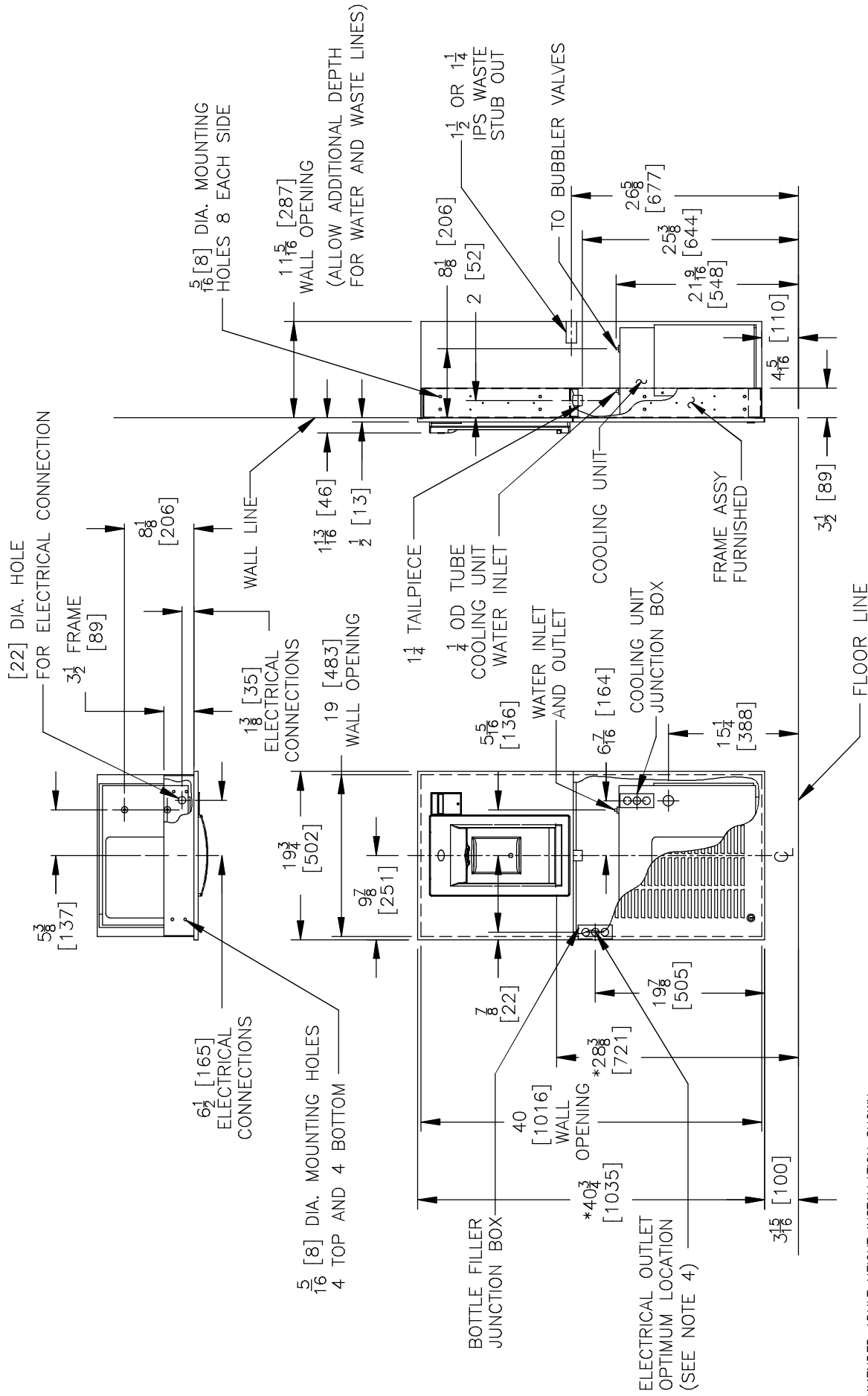


Model	50° F Drinking Water 90° F Ambient Air Temp*		115 Volts, 60 HZ				Cabinet Color Finish	Net Wt. Approx.
	Rated Capacity GPH	Base Rate GPH	Compr. HP	Full Load Amps	Rated Watts			
MWEBF	-	-	-	.10	7	-	26 Lbs.	
MW8EBF	8.0	8.0	1/5	4.6	340	No	78 Lbs.	
MW12EBF	12.0	12.0	1/5	8.7	620	No	78 Lbs.	

*Industry Standard Rating Condition 80°F inlet water temperature.

Specifications subject to change without notice

OASIS® AQUA POINTE® HANDS FREE SPORTS BOTTLE FILLER MODELS MWEBF, MW8EBF, MW12EBF



- NOTES:**
- *1. RECOMMENDED ADULT HEIGHT INSTALLATION SHOWN. ADJUST VERTICAL DIMENSIONS AS REQUIRED TO COMPLY WITH FEDERAL, STATE AND LOCAL CODES.
 - *2. STOP VALVE, TRAP, PIPE CONNECTOR TO WASTE LINE NOT PROVIDED. SHORT RADIUS TRAP REQUIRED.
 - *3. ALL DIMENSIONS ARE IN INCHES. DIMENSIONS IN BRACKETS [] ARE IN MILLIMETERS.
 - *4. 115V GROUNDED NORTH AMERICAN DUPLEX RECEPTACLE REQUIRED. THIS DRINKING WATER COOLER IS INTENDED TO BE CONNECTED TO A 20A MINIMUM GROUND-FAULT CIRCUIT INTERRUPTING (GFCI) DEVICE TO MEET UL REQUIREMENTS.

THIRD ANGLE PROJECTION

ROUGHING-IN
AND
DIMENSIONAL DRAWING