



Water Coolers

OASIS INTERNATIONAL

AQUA POINTE™

SPORTS BOTTLE FILLER

MWSMSBF, MWSM8SBF, MWSM12SBF

Suggested Specification

Model MWSM8SBF shall deliver 8.0 gph of 50°F water at 90°F ambient and 80°F inlet water. Model MWSM12SBF shall deliver 12.0 gph of 50°F water at 90°F ambient and 80°F inlet water. Model MWSMSBF is a non-refrigerated Bottle Filler and delivers ambient water. Key AquaPointe bottle filler molded components contain Freshield, WHICH UTILIZES a silver-based antimicrobial compound that reduces the growth of micro-organisms and mildew to protect the surfaces from discoloration, odors and degradation. Basin shall be designed to eliminate splashing and standing water. Cooling system shall use R-134a refrigerant. Shall comply with ANSI A117.1 and ADA. Shall be listed by Underwriters' Laboratories to U.S. and Canadian standards. Shall comply with ANSI/NSF 61.

Model

MWSM8SBF delivers 8.0 gallons of chilled drinking water per hour.

MWSM12SBF delivers 12.0 gallons of chilled drinking water per hour.

MWSMSBF is a non-refrigerated bottle filler. These models satisfy CABO/ANSI A117.1.

Standard Features

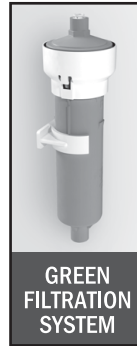
- > Built-in 100 micron strainer stops particles before they enter the waterway
- > Waterways are Lead-free in Materials & Construction
- > Heavy Duty steel frame
- > Product Certified by NSF to NSF/ANSI Standard 61, including AB1953; except for the Green Filter System, which has been tested by independent laboratories to the NSF Standard 42, and 53, but not certified by NSF
- > Waterways Are Lead-Free In Materials & Construction
- > High Efficiency cooling tank and coil
- > Refrigerant R-134a

Finishes

- > Standard cabinet finish: Brushed Stainless Steel
- > Optional cabinet finish: Regency Bronze

Options (at additional cost)

- > Ultra Violet filtration
- > Oasis Green Filtration System



GREEN FILTRATION SYSTEM



SURFACE MOUNT

Doesn't need a cut-out for the unit to mount in the wall, only a small cut-out for the water line.

Installation

- > Prior to installing, consult with local, state and federal codes for proper mounting height
- > Shipped with complete instructions and wall mounting bracket
- > Removable front panels allow for easy access to filtration and refrigeration unit



ADA Compliant for reach ranges. These models meet guidelines for children's (ages 5 and up) accessibility providing the floor to button height is less than 40 inches and proper clear floor space is provided for frontal approach.



Components in this fountain are lead free as defined by the Safe Drinking Water Act Amendments of 1986, and the Lead Contamination Control Act of 1988.

Product Certified to NSF/ANSI Standard 61, Annex G (weighted average lead content of $\leq 0.25\%$) and is in compliance with California's Health & Safety Code Section 116875 (commonly known as AB1953). Units incorporating the Green Filter option are not NSF approved. However, the Green Filter has been independently tested to the NSF standards 42 and 53.

Models covered by this specification comply with all known Plumbing Codes. Listed by Underwriters' Laboratories to U.S. and Canadian standards.



Freshield



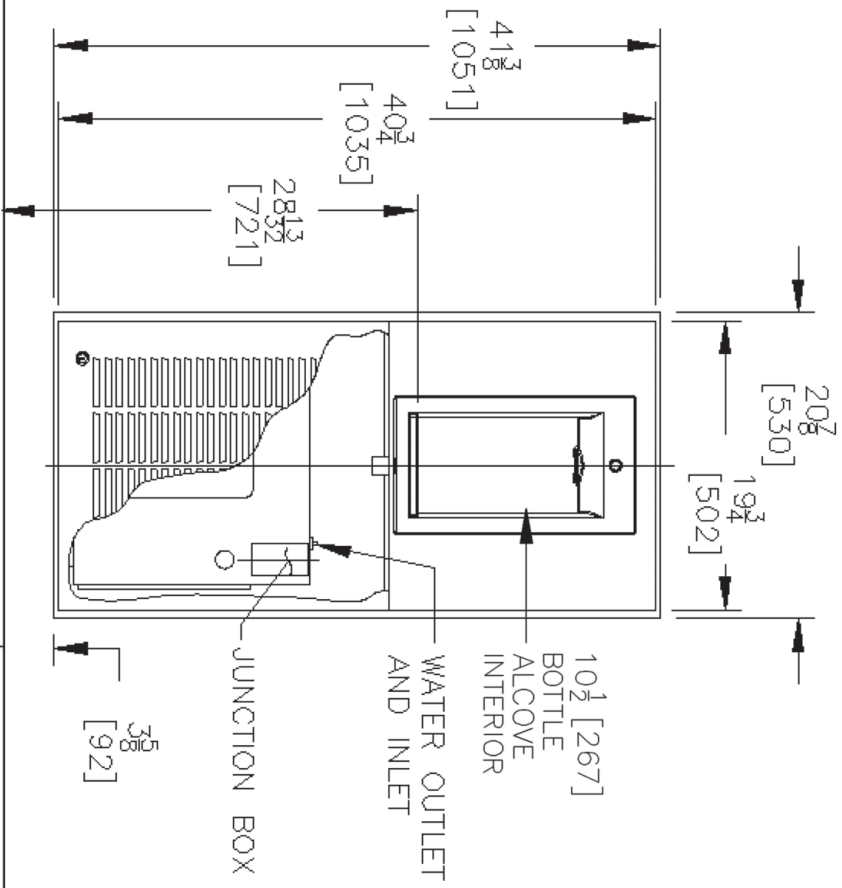
Certified to NSF/ANSI 61 AB1953

Model	50° F Drinking Water 90° F Ambient Air Temp*		115 Volts, 60 HZ			Cabinet Color Finish	Net Wt. Approx.
	Rated Capacity GPH	Base Rate GPH	Compr. HP	Full Load Amps	Rated Watts		
MWSMSBF						Yes	36 Lbs.
MWSM8SBF	8.0	8.0	1/5	4.6	340	Yes	80 Lbs.
MWSM12SBF	12.0	12.0	1/5	8.7	620	Yes	80 Lbs.

*Industry Standard Rating Condition 80° F inlet water temperature.

Specifications subject to change without notice

OASIS™ SPORTS BOTTLE FILLER MODEL WWSMSBF, WWSM8SBF, WWSM12SBF

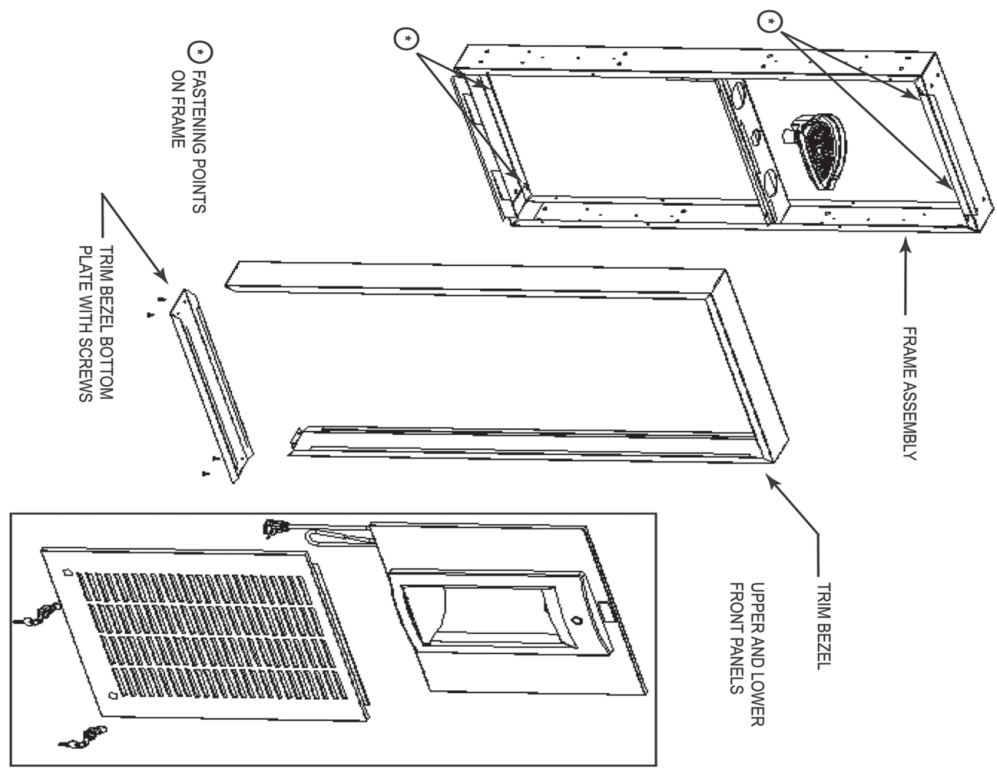


NOTES:

1. RECOMMENDED ADULT HEIGHT INSTALLATION SHOWN. ADJUST VERTICAL DIMENSIONS AS REQUIRED TO COMPLY WITH FEDERAL, STATE AND LOCAL CODES.
2. STOP VALVE, TRAP, PIPE CONNECTOR TO WASTE LINE NOT PROVIDED.
3. ALL DIMENSIONS ARE IN INCHES. DIMENSIONS IN BRACKETS [] ARE IN MILLIMETERS.



TRIM BEZEL INSTALLATION



- INSTALL FRAME ASSEMBLY TO A FLAT SURFACE. USE APPROPRIATE FASTENING HARDWARE (NOT INCLUDED). REFER TO THE FIRST TWO PAGES OF THIS INSTRUCTION PACKAGE FOR CORRECT INSTALLATION HEIGHT.
- REMOVE BOTTOM PLATE FROM TRIM BEZEL (4 SCREWS).
- INSTALL TRIM BEZEL TO FRAME ASSEMBLY AND REPLACE BOTTOM PLATE WITH SCREWS.
- INSTALL DRAIN ASSEMBLY, SNAP BUSHINGS AND ANY OTHER ACCESSORIES INCLUDED WITH THIS KIT.
- INSTALL UPPER AND LOWER FRONT PANEL.