

# HWUACP8L

Barrier-Free Wall Mounted Electric Drinking Fountain



## FEATURES & BENEFITS

### Hi/Lo Design

Barrier-free capabilities combine with its ease of use allows for a number of installation location possibilities.

### Activation

Unit is easily activated by front and side push pads.

### Maintenance

Easily serviced with external stream height adjustment and built-in 100 micron strainer.

### Finish

Decorative and durable Sandstone powder-coated paint skirt topped with a stainless steel basin provides an easy to clean surface.

### Bubbler

Flexible rubber hooded bubbler head protects against occasional mishaps.



## OPTIONS

- Glass Filler: Model 5551, push lever operated, self-closing, polished chrome-plated brass, deck mounted, gooseneck cold water glassfiller faucet.
- Filter: Model 6426, 12" x 2", in-line lead removal element that reduces lead from incoming water supply.
- Cane Touch Skirt: Model SK9 is a molded Sandstone powder-coated steel skirt kit for installation on the high unit to comply with Child ADA and Texas Accessibility when properly installed with the barrier-free wall mounted cooler HWUACP8L.

## SPECIFICATIONS

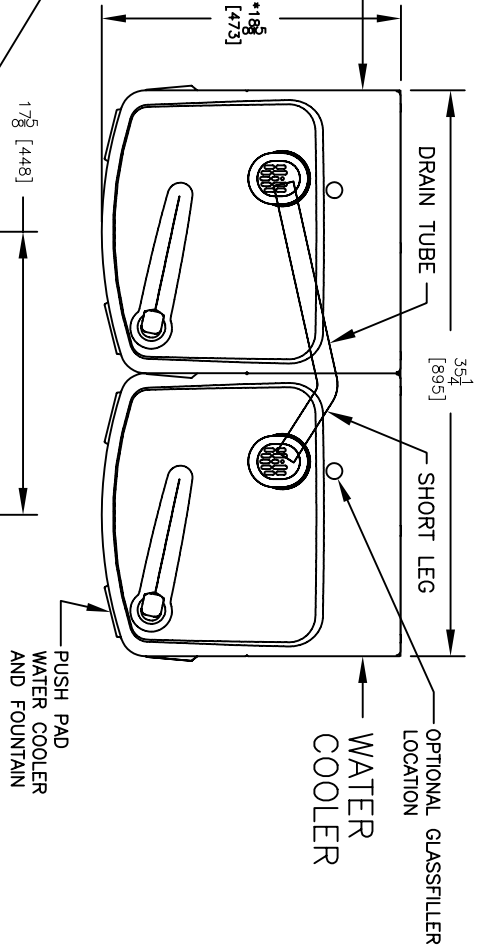
Haws model HWUACP8L "Hi-Lo" pressure drinking water cooler shall deliver a minimum of 8 gph (30.3 LPH) of water at 50°F (10°C) cooled from 80°F (26.7°C) inlet water at 90°F (32.2°C) ambient. Each fountain shall have front and side mounted push pads requiring less than 5 pounds of force to activate that initiate water flow through a flexible hooded rubber bubbler having a non-squirt feature. An internally mounted valve and adjustable stream regulator shall control water flow between 20 and 90 psig. R-134a refrigeration system shall be hermetically sealed and refrigerant flow shall be capillary tube controlled. An adjustable thermostat having an off position shall control refrigeration system. Stainless steel top shall have integral drain strainer. Heavy-duty galvanized frame shall support Granite powder-coated galvanized exterior panels. Built-in 100 micron strainer and external stream height adjustment are enclosed by a removable lower panel which

## APPLICATIONS

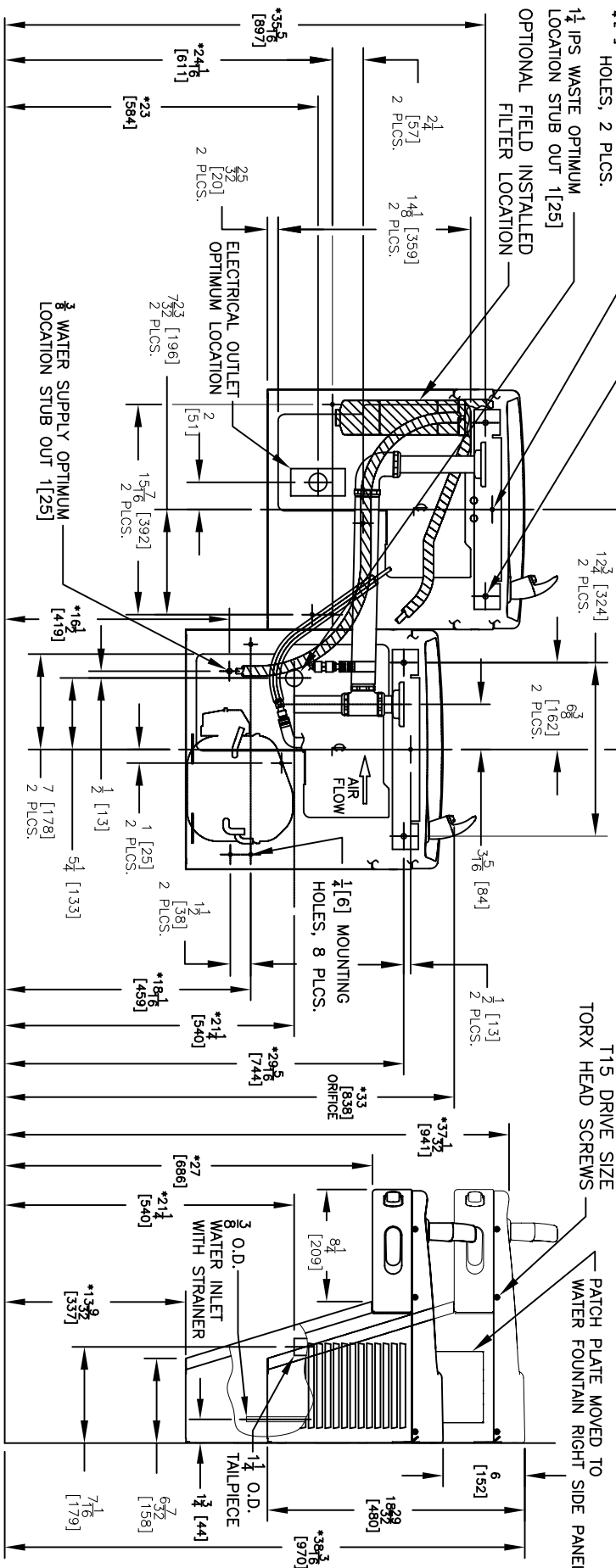
Perfect for either public or private settings, our "Hi-Lo" barrier-free electric water coolers are a great fit in indoor environments. This series is precisely mounted, making it a nice addition to any surrounding. Beautiful satin finish basin help to maintain the fountains overall appeal so it always remains looking as new as it did when it was installed. Specifically, this type fountain may be placed in high traffic areas such as: office buildings, shopping malls, and other indoor environments where there is a demand for a chilled water source and/or wheel chair access.





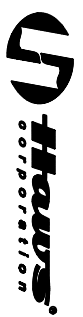


- NOTES:**
1. TRAP, STOP VALVE AND ELECTRICAL OUTLET NOT FURNISHED.
  2. ALLOW 4 INCHES [102 MM] MIN. PER SIDE FOR VENTILATION.
  3. RECOMMENDED ADULT BARRIER FREE HEIGHT INSTALLATION SHOWN. REDUCE HEIGHT BY 3 INCHES FOR INSTALLATIONS USED PRIMARILY BY CHILDREN AGES 12 AND YOUNGER. UNIT SHALL ALSO HAVE A MINIMUM CLEAR FLOOR SPACE 50[760] BY 48[1220]. ADJUST VERTICAL DIMENSIONS AS REQ'D TO COMPLY WITH FEDERAL, STATE, AND LOCAL CODES.
  4. ALL DIMENSIONS ARE IN INCHES. DIMENSIONS IN BRACKETS [ ] ARE IN MILLIMETERS.



# RIGHT SIDE LOW CONFIGURATION

(SEE SHEET 1 FOR RIGHT SIDE HIGH)



INFO FAX : 1-888-FAX-HAWS (1-888-329-4297)

1455 Kleppel Ln, Sparks, NV, 89431  
 Phone: 775-559-4712 Fax: 775-559-7424  
 Haws Ag Baurweg 3 CH-3401 Burgdorf Switzerland  
 Haws (Pty) Ltd 74 Sungai Kadul Loop Singapore 729531  
 e-mail: Haws@hawsco.com website: www.hawsco.com

DESIGN NO.	4833	REVISED PER	BT	MODEL(S)	HWUACP8L/HWUACP8LS
ENCL.	0	DATE	3/10/08	DATE	02/05/03
FEDEX V.	310708	CHANGED	NO	HWUACP8L/HWUACP8LS	0
APPROVER		DATE		DATE	02/05/03
ISSUE	1/1/04	REVISION	1	DATE	02/05/03
DATE	02/05/03	ISSUE	1	DATE	02/05/03
INFO FAX DOC #	24982278/24982577				
ISSUE	1/1/04	REVISION	1	DATE	02/05/03
DATE	02/05/03	ISSUE	1	DATE	02/05/03
SIZE	A	SHEET	2 OF 2		