

# 1075

## Wall Mounted Drinking Fountain



### FEATURES & BENEFITS

#### Integrated Trap

Spacious fountain design allows for the trap to be internally mounted which allows for easy access, and aids and reduces the installation process.

#### Construction

Cast polymarble with soft rounded corners and a white gel-coat finish provides this fountain with elegant and long lasting looks.

#### Quality Control

Fountain is pre-built and fully water and pressure tested to ensure no leaks and proper function for reduced installation time and added peace of mind.

#### Push Button

With its patented (Pat.# 6,981,692) push-button valve assembly which allows for front access stream adjustment as well as cartridge and strainer access, this fountain offers the ultimate in ease of maintenance.

#### Bubbler Head

Polished chrome-plated brass bubbler head features an integral basin shank for added strength, and is equipped with a shielded, anti-squirt orifice that provides a steady sanitary source of water.



### OPTIONS

- Bubbler Head: Model 5725 EnviroGard™ bubbler is a polished chrome-plated solid brass bubbler head with stainless steel water activated pop up canopy. (Pat.# 7,025,282)
- Filter: Model 6426, 12" x 2", in-line lead removal element that reduces lead from incoming water supply.
- Mounting: Model 6700 universal mounting plate for most wall mounted fountains.
- Support Carrier: Model 6800 universal in-wall mounting support for use with most fountains.

To see all options for this model, visit [www.hawsc.com](http://www.hawsc.com).

### SPECIFICATIONS

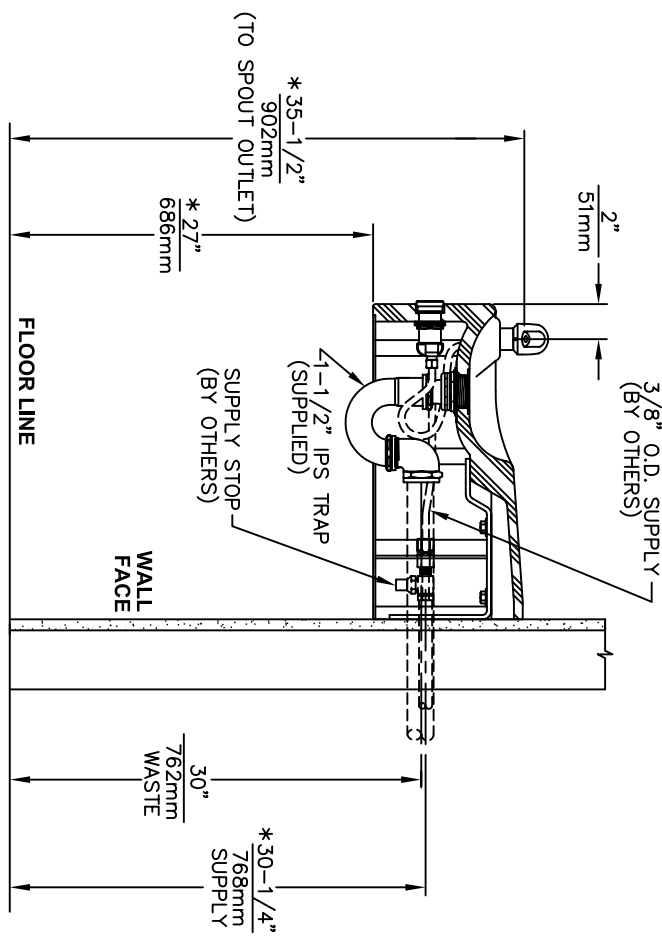
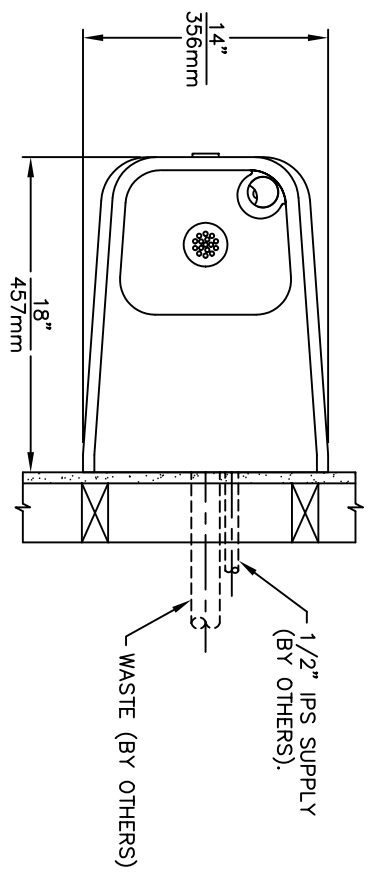
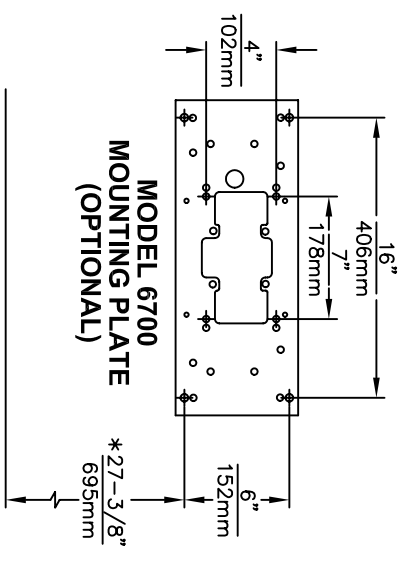
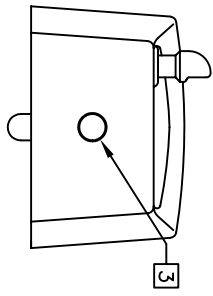
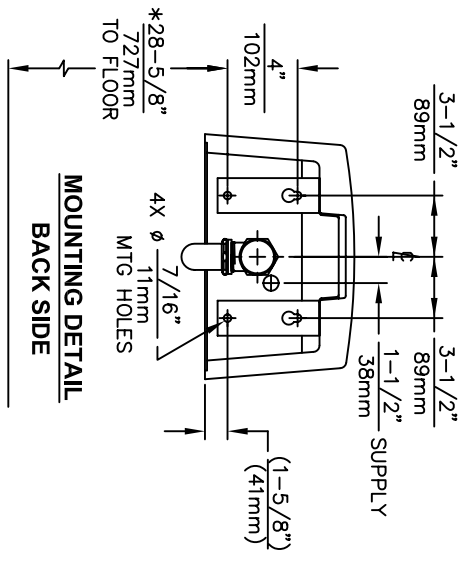
Model 1075 wall mounted barrier-free drinking fountain shall include a white polymarble basin with integral dual zinc-plated mounting brackets, push-button operated valve with front accessible cartridge and flow adjustment, polished chrome-plated brass vandal-resistant bubbler head, polished chrome-plated brass vandal-resistant waste strainer, vandal-resistant bottom plate, and chrome-plated 1-1/2" IPS trap.

### APPLICATIONS

Perfect for either public or private settings, our white polymarble series is a great fit in indoor environments. This series is precisely mounted, making it a nice addition to any surrounding. Elegant gloss finish and color consistency throughout the polymarble maintain the fountains overall appeal so it always remains looking as new as it did when it was installed. Specifically, this type of wall mounted drinking fountain may be placed in settings such as: community centers, schools, and other indoor environments where durability is necessary.

Model meets all current Federal Regulations for the disabled including those in the Americans with Disabilities Act. Haws manufactures drinking fountains, electric water coolers and electric drinking fountains to be lead-free by all known definitions including ANSI/NSF Standard 61, Section 9, California Proposition 65, and the Federal Safe Drinking Water Act.





**NOTES:**

1. ROUGH-IN DIMENSIONS MAY VARY ± 1/2" (12.7mm).
2. WHEN INSTALLING THIS UNIT, LOCAL, STATE OR FEDERAL CODES SHOULD BE ADHERED TO. FOR INSTALLATION HEIGHTS OTHER THAN SHOWN, DIMENSIONS MARKED (\*) MUST BE ADJUSTED ACCORDINGLY.
3. REFER TO 5874/VRK5874 OPERATION AND MAINTENANCE MANUAL FOR PUSH BUTTON AND VALVE INSTALLATION/MAINTENANCE INSTRUCTIONS.

**INFO FAX : 1-888-FAX-HAWS (1-888-329-4297)**

1455 Kiappa Ln, Sparks NV, 89431  
 Phone: 775-359-4712 Fax: 775-359-7424  
 Haws Ag Building 3 CH-3401 Burgdorf Switzerland  
 Haws Mfg. Pte Ltd 74 Sunglei Kodut Loop Singapore 729531  
 e-mail: Haws@hawsco.com Website: www.hawsco.com

EGR. NO.	REVISION	DATE	BY
1075	1075	4/19/93	SK
DRAWN: EONE-SZTS			
DATE: 4/19/93			
CHECKED: SK			
DATE:			
SCALE: 1:1			
BRANDING TREE: INSTALLATION/FABRICATION			
MODEL(S): 1075			
INFO FAX DOC # 21075			
CROSS REFERENCE			
10708000	10708000	10708000	10708000
SIZE: A	SHEET: 1	OF: 1	



# INSTALLATION, OPERATION & MAINTENANCE INSTRUCTIONS

1455 Kleppe Lane ♦ Sparks, NV 89431-6467 ♦ (775) 359-4712 ♦ Fax (775) 359-7424  
HAWS AG ♦ Bachweg 3 ♦ CH-3401 Burgdorf ♦ Switzerland  
Haws Mfg. Pte Lt. ♦ 2A Sungei Kadet Drive ♦ Singapore 729554  
Avlis-Avenida Senador, Testonio Vilela ♦ 505 Jardim Aeroporto ♦ Itu, S.P. 13304-550 ♦ Brasil  
E-mail: [haws@hawsco.com](mailto:haws@hawsco.com) ♦ website: [www.hawsco.com](http://www.hawsco.com)

No. 2076440(13)

## Model 1075 Drinking Fountain

**NOTE TO INSTALLER:** Please leave this information with the Maintenance Department.

### LIMITED WARRANTY

HAWS® warrants that all of its products are guaranteed against defective material or poor workmanship for a period of **one year from date of shipment**. HAWS liability under this warranty shall be discharged by furnishing without charge F.O.B. HAWS Factory any goods, or part thereof, which shall appear to the Company upon inspection to be of defective material or not of first class workmanship, provided that claim is made in writing to company within a reasonable period after receipt of the product. Where claims for defects are made, the defective part or parts shall be delivered to the Company, prepaid, for inspection. HAWS will not be liable for the cost of repairs, alterations or replacements, or for any expense connected therewith made by the owner or his agents, except upon written authority from HAWS, Sparks, Nevada. HAWS will not be liable for any damages caused by defective materials or poor workmanship, except for replacements, as provided above. Buyer agrees that Haws has made no other warranties either expressed or implied in addition to those above stated, except that of title with respect to any of the products or equipment sold hereunder and that HAWS shall not be liable for general, special, or consequential damages claimed to arise under the contract of sale. The drinking fountain manufactured by HAWS is warranted to function if installation and maintenance instructions provided are adhered to. The units also must be used for the purpose for which they were intended.

**NO OTHER WARRANTIES EXPRESSED OR IMPLIED ARE AUTHORIZED, PROVIDED OR GIVEN BY HAWS.**

**SHOULD YOU EXPERIENCE DIFFICULTY WITH THE INSTALLATION OF THIS MODEL, PLEASE CALL:**

**1-800-766-5612**

**FOR PARTS CALL:**

**1-800-758-9378**

**(U.S.A. AND CANADA ONLY) MONDAY-THURSDAY: 6:00 A.M. – 4:00 P.M. PST  
FRIDAY: 6:00 A.M – 1:00 P.M. PST**

**RECOMMENDED TOOLS:** Hack saw, pipe joint sealant, screwdriver, level, 12" adjustable wrench, 10" pipe wrench, 5/64" hex key wrench, 9/16", 1/2", 7/16" socket wrench or open end wrench.

**LOCATION OF UNIT:** The Model 1075 Drinking Fountain is a wheelchair accessible drinking water facility. The height dimensions shown, meet current ADA requirements. When installing this unit, local, state or federal codes should be adhered to. If height other than shown is required, then dimensions must be adjusted accordingly.

**SUPPLY LINE:** The minimum recommended line size is 1/2" IPS with 30-90 psi (2-6 ATM) pressure. Where sediment or mineral content is a problem, an inlet filter is recommended.

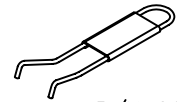
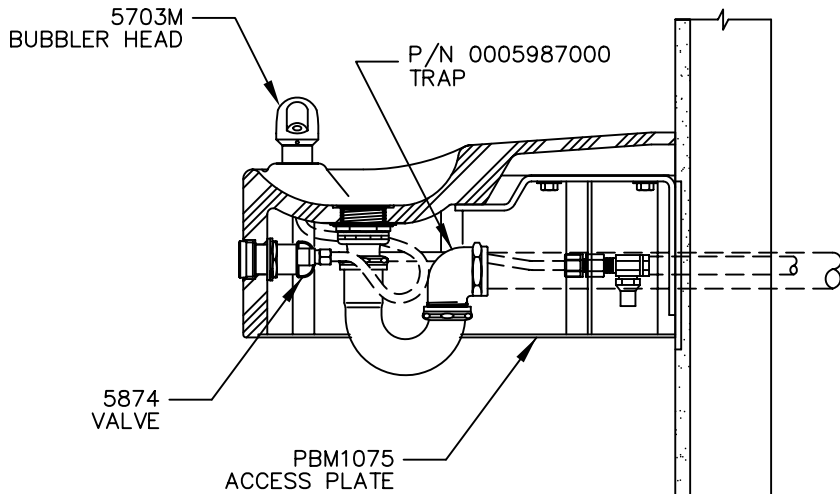
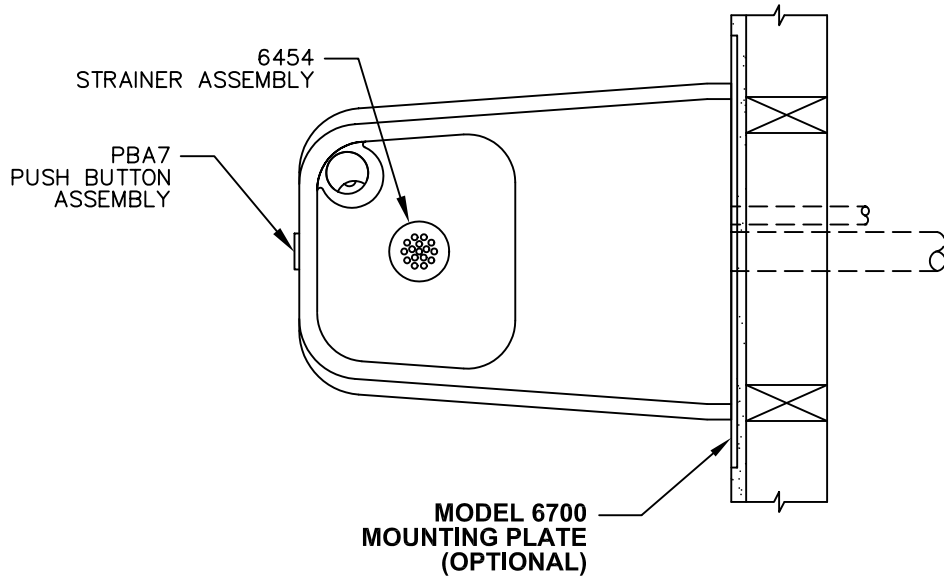
**PLUMBING CONNECTIONS:** Inlet is 3/8" O.D. compression fitting. Waste outlet is female 1-1/2" IPS.

**MAINTENANCE:** Periodically clean the strainer. Refer to 5874 Valve Manual for more information.

## TROUBLESHOOTING

PROBLEM	REPAIR CHECKLIST
1. Insufficient bubbler flow.	<ul style="list-style-type: none"><li>1a. Check that inlet screwdriver stop valve is wide open. (Customer supplied). Turn counterclockwise.</li><li>b. Verify minimum 30 psi supply pressure.</li><li>c. Clean strainer. See 5874 Valve Manual.</li><li>d. Adjust valve to increase flow. Use front adjust screw or see 5874 Valve Manual.</li></ul>

# PARTS BREAKDOWN



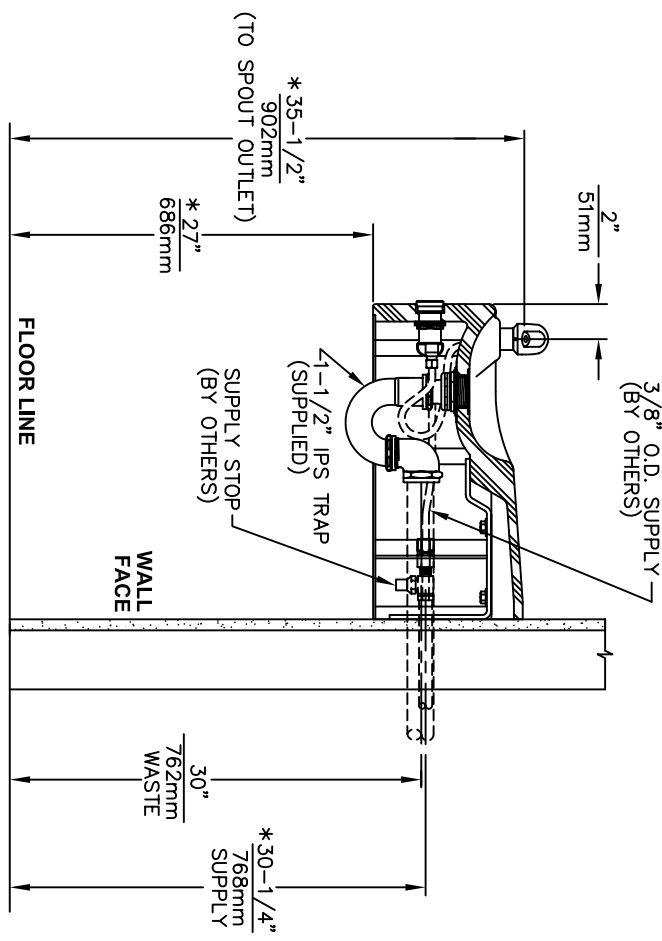
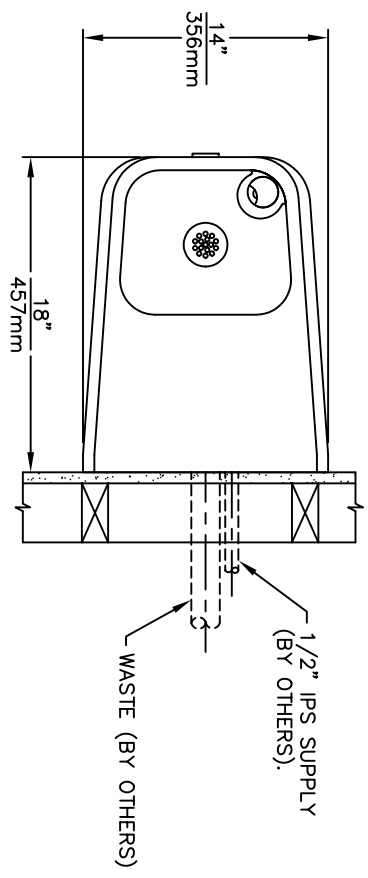
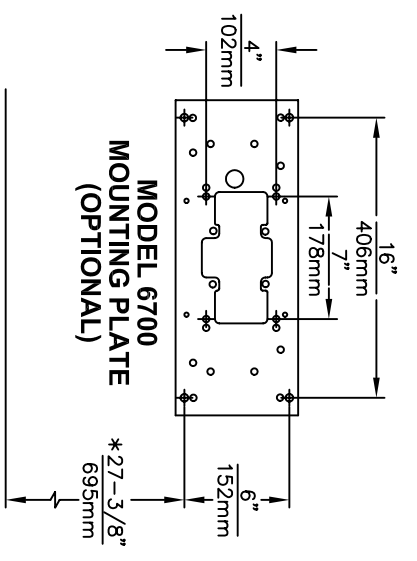
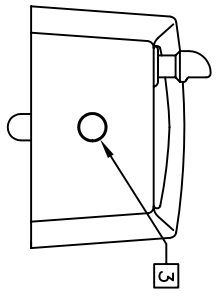
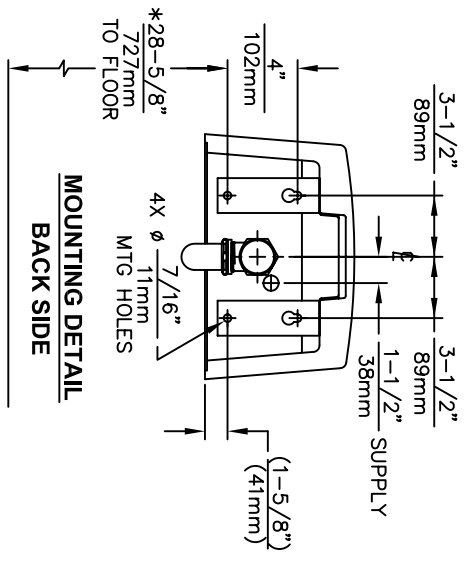
P/N 0006983506  
SPANNER WRENCH

**WHEN ORDERING  
PARTS PLEASE  
SPECIFY YOUR  
MODEL NUMBER**

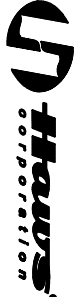


1455 KLEPPE LANE BACHWEG 3  
SPARKS, NEVADA CH3401 BURGENDORF  
SWITZERLAND

DRAWN BY: D. OLLOM	DATE: 11/25/95	CHECK BY:	APP'D BY:	SCALE: 1/4
TITLE: 1075			PART NUMBER: 0002076440	
DRAWING TYPE: PARTS BREAKDOWN			DRAWING NUMBER: 12782C00	REV. 13



- NOTES:**
1. ROUGH-IN DIMENSIONS MAY VARY ± 1/2" (12.7mm).
  2. WHEN INSTALLING THIS UNIT, LOCAL, STATE OR FEDERAL CODES SHOULD BE ADHERED TO. FOR INSTALLATION HEIGHTS OTHER THAN SHOWN, DIMENSIONS MARKED (\*) MUST BE ADJUSTED ACCORDINGLY.
  3. REFER TO 5874/VRK5874 OPERATION AND MAINTENANCE MANUAL FOR PUSH BUTTON AND VALVE INSTALLATION/MAINTENANCE INSTRUCTIONS.



**Haws Corporation**

INFO FAX : 1-888-FAX-HAWS (1-888-329-4297)  
 1455 Kiappa Ln, Sparks NV, 89431  
 Phone: 775-359-4712 Fax: 775-359-7424  
 Haws Ag Building 3 CH-3401 Burgdorf Switzerland  
 Haws Mfg. Pte Ltd 74 Sunglei Kodut Loop Singapore 729531  
 e-mail: Haws@hawsco.com Website: www.hawsco.com

REG. NO. 1075 ECRN: 3478 DATE: 4/19/93 APPROVER:	MODEL(S): 1075 INFO FAX DOC #: 21075 SCALE: 1:1 DRAWING TYPE: INSTALLATION/FABRICK	REG. NO. 1075 ECRN: 3478 DATE: 4/19/93 APPROVER:	REG. NO. 1075 ECRN: 3478 DATE: 4/19/93 APPROVER:
---	---	---	---