

Brita® Hydration Station™

RECESSED MOUNT

MODEL 2000

FEATURES & BENEFITS

SENSOR OPERATED

Electric sensor allows for touch-free hygienic operation, eliminating the need for manual activation.

ANTIMICROBially PROTECTED

Specific components are antimicrobially protected using the natural protection of silver which helps protect against the growth of mold and mildew on those treated components.

QUALITY CONTROL

The Brita® Hydration Station™ is pre-built and fully water and pressure tested to ensure no leaks and proper function for reduced installation time and added peace of mind.

FINISH

#4 satin stainless steel back panel can be easily cleaned and maintained while also resisting corrosion.

AUTO PURGE

Automatically cycles once every 24 hours to assure a fresh water supply as well as trap integrity.

SERVICING

Durable ABS plastic front panel allows simple access to internal components. Hidden lock and hinges to discourage vandals.

OPTIONS

- ❑ Filter: Brita® Model 6424 is the replacement filter for the Brita® Hydration Station™.
- ❑ Chiller: Model HCR8, chiller provides for instantaneous cooling to meet a continuous demand for chilled water.
- ❑ Chiller mounting frame: Model MTGFR.HSC

SPECIFICATIONS

Model 2000 Brita® Hydration Station™ is a semi-recessed, wheel chair accessible bottle or cup filling station constructed of durable ABS plastic and 16 gauge, Type 304 Stainless Steel with a satin finish. It features an electric sensor for touch-free hygienic operation and a 30-second timeout preventing unwanted use, laminar flow to prevent splashing, .5 gpm flow rate for quick fill-up, and antimicrobially treated components to prevent the growth of mold and mildew on those treated surfaces. 2400 gallon carbon block filter reduces chlorine (taste and odor) and lead, and removes cysts. The mounting consists of heavy gauge galvanized steel frame, hardware and trap access panel. 110 volt, 60Hz, and .1 amp draw when in use. Tailpiece is 1-1/4" O.D. Provision for trap (not included) must be made in or behind wall.



APPLICATIONS

Perfect for either public or private indoor settings, the Brita® Hydration Station™ is a great fit in areas where aesthetics are important to the overall appeal of the architecture. Specifically, this type of semi-recessed wall mounted bottle filling station would be ideal in settings such as: office buildings, airports, schools and other locations in and around office buildings.

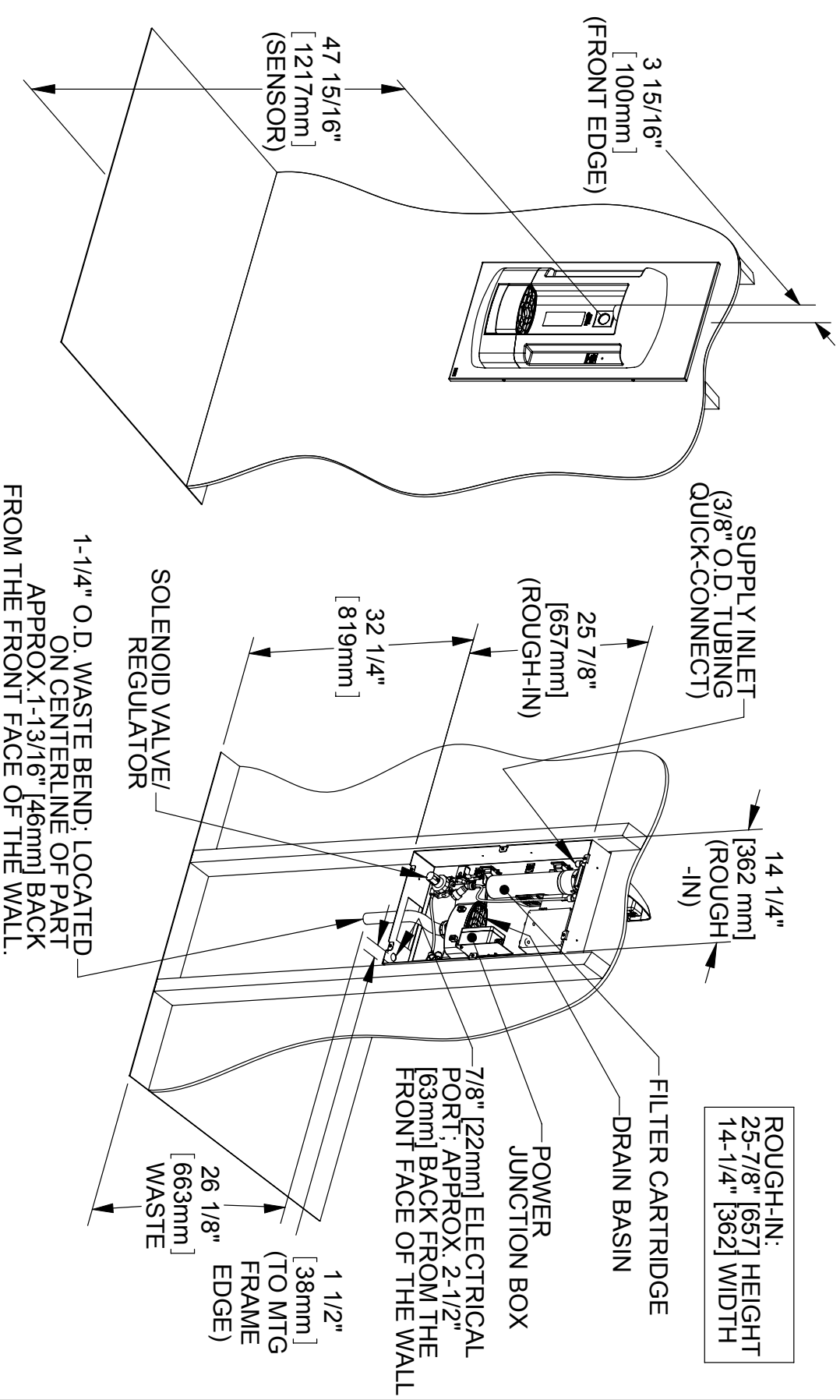
Model 2000 meets the Americans with Disabilities Act when mounted at the correct height. Haws manufactures drinking fountains, electric water coolers and electric drinking fountains to be lead-free by all known definitions including NSF/ANSI Standard 61, Section 9, NSF/ANSI Standards 42 & 53, CSA Standard B483.1. California Proposition 65 and the Federal Safe Drinking Water Act. Product is compliant to California Lead Plumbing Law (AB 1953). Model 2000 is Certified to the Standards for Safety Electric Plumbing Accessories (ANSI/UL 1951) and Industrial Control Equipment (CSA C22.2 No. 14).



Distributed by Haws Corporation® • www.britahydrationstation.com • Call Haws at 1.888.909.4297

The BRITA trademark and logo are registered trademarks of Brita, LP and are used under license by Haws Corporation®. All rights reserved.

REV. 10/10 2M



APPROVALS	DATE
DRAWN J. LINN	9/08
CHECKED	
APPROVED	
ECN NO. 4118	
MATERIAL	
FINISH	

		1455 KLEPPE LANE SPARKS, NEVADA 89431 USA
2000 BRITA® HYDRATION STATION™		
<small>NOTICE OF PROPRIETARY INFORMATION INFORMATION CONTAINED HEREIN IS THE SOLE PROPERTY OF HAWA CORPORATION AND THIS DOCUMENT IS NOT TO BE REPRODUCED, USED OR DISCLOSED IN WHOLE OR IN PART TO ANYONE WITHOUT THE PERMISSION OF HAWA CORPORATION.</small>		
SCALE	SIZE	PART NO.
1:16	A	0002076600.D
REV.		9

