



Water Coolers

SEMI-RECESSED CUSPIDOR

FLF201PM

Model

FLF201PM is a stainless steel semi-recessed cuspidor for direct connection to a water supply.

Standard Features

- > Waterways are Lead-Free in Materials & Construction
- > Button On Cabinet Front Supplies Rinse Water To The Cuspidor Spray Heads
- > Stainless Steel Surfaces
- > Product Certified to NSF/ANSI Standard 61, Annex G (AB1953)
- > Limited 1-Year Warranty

Finishes

- > Standard cabinet finish: Stainless Steel

Installation

- > Prior to roughing-in, consult local, state and federal codes for proper mounting height.
- > Shipped with complete instructions.



Components in this fountain are lead free as defined by the Safe Drinking Water Act Amendments of 1986, and the Lead Contamination Control Act of 1988.

Limited 1-Year Warranty (Continental limits of the United States and Canada): One year from date of installation on parts only. Detailed warranty certificate enclosed with each drinking fountain; sample copy available upon request.

Export Warranty: One year on component parts. Detailed warranty certificate enclosed with each drinking fountain; sample copy available upon request.

Product Certified to NSF/ANSI Standard 61, Annex G (weighted average lead content of $\leq 0.25\%$) and is in compliance with California's Health & Safety Code Section 116875 (commonly known as AB1953).

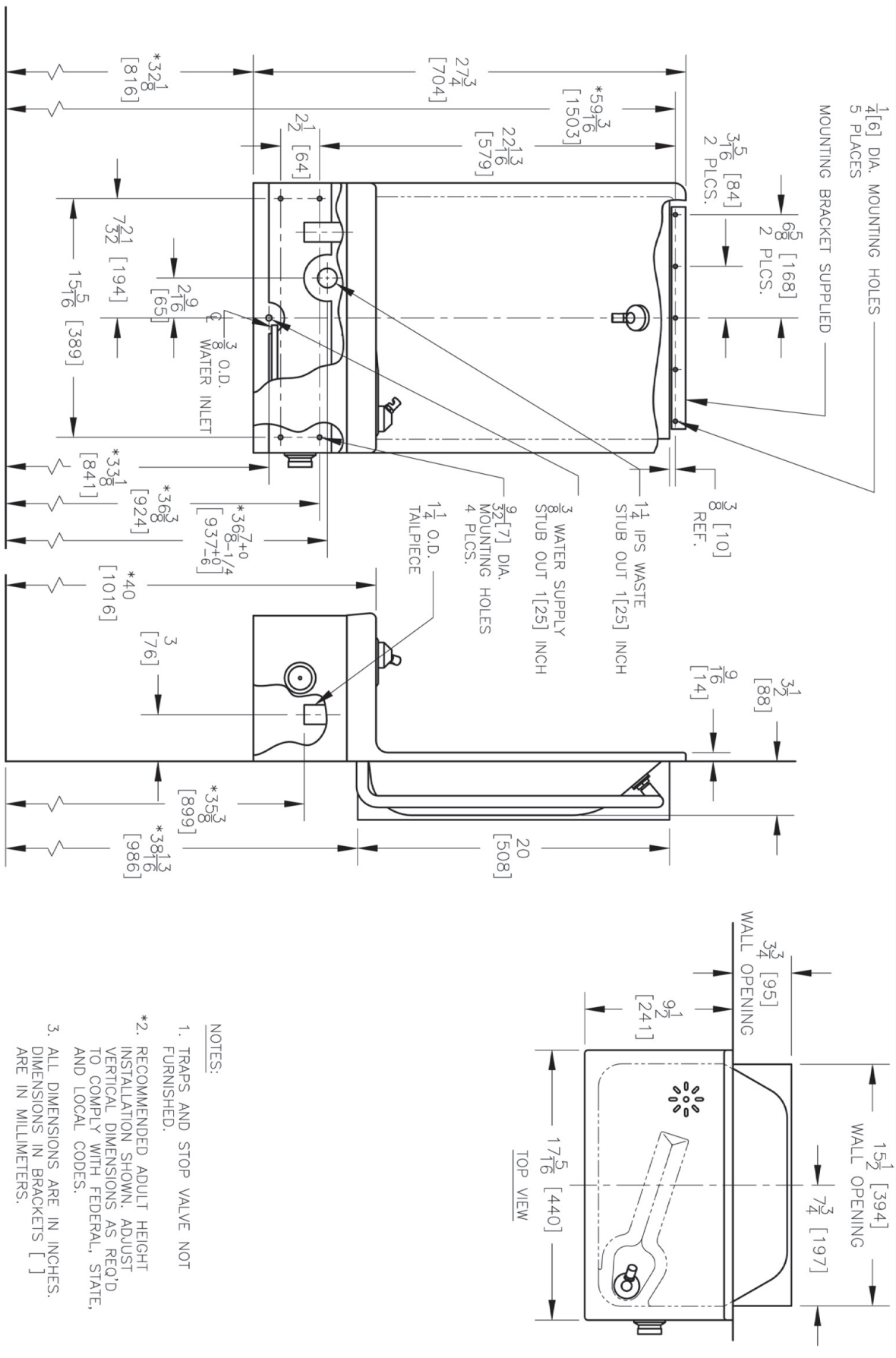
Models covered by this specification comply with all known Plumbing Codes. Listed by Underwriters' Laboratories to U.S. and Canadian standards.



Certified to NSF/ANSI 61-G

Physical Dimensions In Inches						
Model	Style	Height	Width	Depth	Extended From Wall	Recessed Into Wall
FLF201PM	Semi-Recessed	27 3/4"	17 5/16"	13"	9 1/2"	3 1/2"

OASIS™ SEMI-RECESSED CUSPIDOR MODEL FLF201PM



NOTES:

1. TRAPS AND STOP VALVE NOT FURNISHED.
- *2. RECOMMENDED ADULT HEIGHT INSTALLATION SHOWN, ADJUST VERTICAL DIMENSIONS AS REQ'D TO COMPLY WITH FEDERAL, STATE, AND LOCAL CODES.
3. ALL DIMENSIONS ARE IN INCHES. DIMENSIONS IN BRACKETS [] ARE IN MILLIMETERS.



THIRD ANGLE PROJECTION

ROUGHING-IN AND DIMENSIONAL DRAWING