



**MODEL:**  S300-2E-Q  S500-5E-Q  S1000-10E-Q  
 S-L/R (Less Refrigeration)

**Free-Standing Cooler**



These water coolers are certified to NSF/ANSI 61.

**STORAGE TANK**

Non-pressurized stainless steel evaporator/storage tank for long life. Waterways are certified to NSF/ANSI 61, far exceeding the requirements of the Safe Drinking Water Act.

**REFRIGERATION SYSTEM**

Hermetically sealed, positive start compressor with lifetime lubrication and built-in overload protection, efficient capillary sizing, large capacity dryer-strainer, and self-lubricated fan cools copper/aluminum condenser. System uses R134A refrigerant. Protected by Halsey Taylor's Limited 5 Year Warranty.

**VENTILATION**

Insure proper ventilation by maintaining 6" (152mm) minimum clearance from cabinet louvers to wall.

**SUGGESTED SPECIFICATIONS**

Shall deliver ( ) GPH of 50° F water at 90° F ambient and 80° F inlet water. Shall have stainless steel basin with fixed drain strainer. Bubbler shall be two stream, mound-building type. Separate valve and automatic stream regulator shall be mounted within cabinet. Refrigeration system shall employ high efficiency, positive start compressor using R134A, non-pressurized tank with totally encapsulated insulation and be controlled by positive sensing thermostat. The manufacturer shall certify the unit to meet the requirements of NSF/ANSI 61, and the Safe Drinking Water Act. Unit complies with ARI Standard 1010.

NOTE: Continued product improvement makes specifications subject to change without notice. See Halsey Taylor website for most current spec sheet.



**GENERAL**

Self-contained, electric refrigerated, free-standing water cooler designed to be easily accessible to able-bodied individuals. Unit is certified to NSF/ANSI 61 and meets requirements of the Safe Drinking Water Act. Unit provides 50° F water at 80° F inlet water and 90° F ambient.

**CABINET**

Heavy-gauge vinyl clad steel. Resistant to wear, moisture, perspiration, heat, and sunlight. Unit mounts flush against wall for a cleaner, more attractive appearance. Optional Stainless Steel is available.

**COOLER TOP**

Non-corrosive stainless steel cooler top, number 300 series with satin finish resists stains and corrosion and is easy to maintain. Anti-splash ridge reduces splatter. Contoured to insure proper drainage.

**BUBBLER**

Exclusive one-piece, chrome-plated two-stream mound-building bubbler with non-removable anti-squirt feature and integral hood insures a satisfying drink of water.

**AUTOMATIC STREAM HEIGHT REGULATOR**

Self-closing assembly is located inside unit to prevent tampering. Unit resists corrosion and liming. A constant stream height is automatically maintained under line pressures that vary from 20 to 105 psi.

**PLUMBING CONNECTIONS**

Waste and supply lines secured to back of cabinet. Waste 1/4" Supply 3/8" tubing.

**INLET STRAINER**

Easily cleaned in-line strainer screen traps particles of 140 microns or larger before they enter the waterway.

**TEMPERATURE CONTROL**

Positive sensing thermostat for controlling temperature of storage tank water. Factory set at 50° F Adjustable ± 5° F.

**Standard Finish is Platinum Vinyl**

**Optional Finishes (extra cost)**

All Stainless Steel

**Optional Accessories (extra cost)**

Glass Filler Kit

Sump Pump Kit

Vandal-Resistant Kit

Water Filter

Easy-Flex™ Bubbler

**Trap and service stop not included.**

JOB NAME: \_\_\_\_\_  
\_\_\_\_\_  
\_\_\_\_\_  
ENGINEER/CONTRACTOR NAME: \_\_\_\_\_  
\_\_\_\_\_  
APPROVAL: \_\_\_\_\_  
DATE: \_\_\_\_\_

**SD - ECONOMY SERIES**

Model No.	GPH Capacity Cooled to 50° F*				Base Rate Cap.	F.L. Amps	Shipping Weight lb.	Rated Watt Usage
	Ambient Air Temp							
	70°F	80°F	90°F†	100°F				
S300-2E-Q	3.6	3.3	3.0	2.7	3.0	2.5	54	230
S500-5E-Q	6.1	5.5	5.0	4.5	5.0	2.5	60	230
S1000-10E-Q	11.9	10.8	9.8	8.8	9.8	5.8	69	535

\* With projector service and tap water at 80° F

† UL listed and complies with ARI Standard 1010



**S300-2E-Q, S500-5E-Q,  
S1000-10E-Q, S-L/R**

**Economy Free-Standing  
Cooler**

(CONTINUED)

**PLUMBING CONNECTIONS**

Enter directly into cabinet. Waste 1 1/4".  
Supply 3/8" tubing.

**Trap and service stop not included.**

**OPERATING PRESSURES**

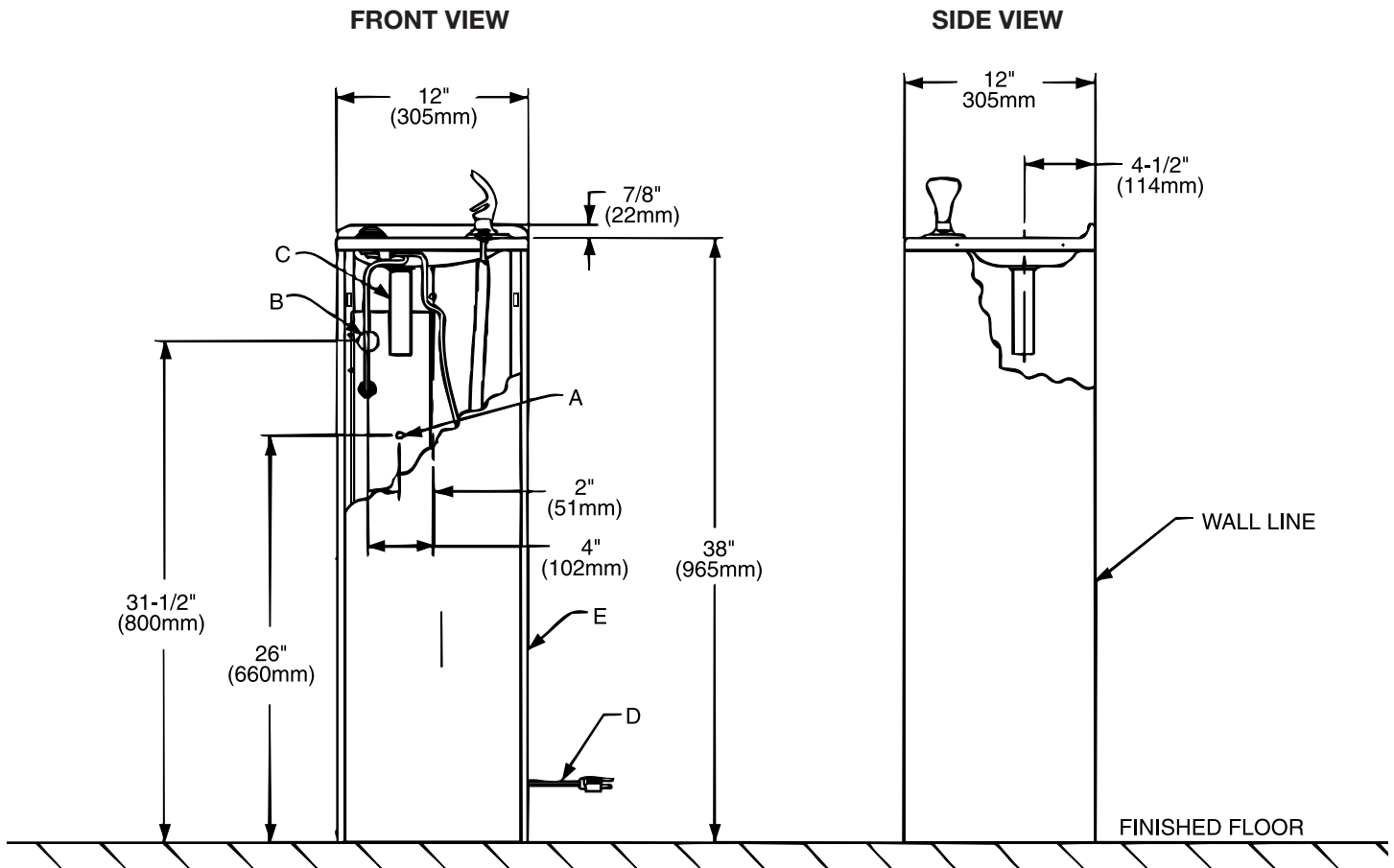
Supply water-105 psi maximum

**ELECTRICAL**

Furnished with plug-in, 3-wire grounding type service cord. Standard 120 volt, 60 Hz, single phase. Transformers available for other power supplies. (See capacity chart for amp rating.)

Install 120-volt receptacle, rated at 15-amp minimum to receive 3-wire parallel blade grounding type male plug.

**Note:** Installation outdoors in an unprotected environment is not recommended.



NOTE: A service supply stop must be installed at the cooler inlet line.

- A = Recommended water supply location 3/8" O.D. unplated copper tube connect stub 1-1/2" (38mm) out from wall shut off by others
- B = Recommended location for waste outlet 1-1/4" O.D. drain
- C = 1-1/4" Trap not furnished
- D = Electrical supply (3) wire recessed box
- E = Insure proper ventilation by maintaining 4" (102mm) (Min.) Clearance from cabinet louvers to wall